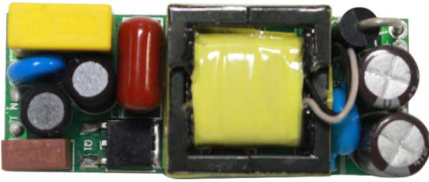


# Huizhou Hi-Zealed Electronic Co., Ltd.



Add: No.12, Jinling Road, Zhongkai Hi-tech Development Zone,  
Huizhou City, Guangdong, China 516006  
Tel: 86-752-2771789 Fax: 86-752-2771684  
Email: [hizealed@hi-zealed.cn](mailto:hizealed@hi-zealed.cn)  
Web: [www.hzleddriver.com](http://www.hzleddriver.com)

## Constant Current *HAD021CXI-G*

### Product Features

- Constant current output. Max power 21W.
- Isolated structure. High PF > 0.95
- Short circuit, over current and over voltage protection. Efficiency up to 85% .

### Technical Specifications

Model No.	Output Power	Input Voltage Range	AC-Frequency	Standby Power	Output Current	On Load Voltage	Power Factor	Efficiency	Dimensions	Weight
HAD021 CXI-G	18 W	90-264V AC	50-60Hz	0.22A Max	500 mA	21-36V	0.95	>83%	53*21*18mm	25g

\*The current can be adjusted according to demand from 120mA-280mA

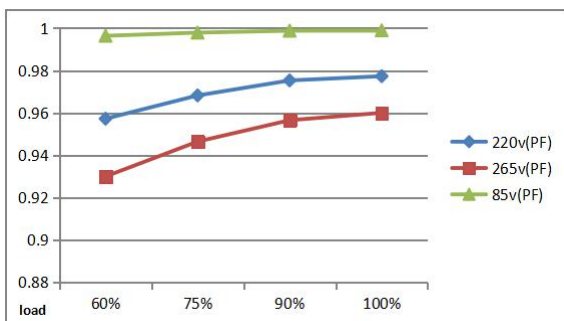
### Environmental Specifications

<b>Operating Temperature</b>	-30~45°C
<b>Storage Temperature</b>	-40~+70°C
<b>Thermal Dissipation</b>	Nature
<b>Relative Humidity</b>	5~95%
<b>Isolation Voltage</b>	---
<b>Vibration</b>	5-55Hz/2g, 30 Minutes
<b>Life Time</b>	18000Hours, at TC max

### Conformity & Standards

<b>EMI</b>	EN55022 EN55015 Class B
<b>Safety</b>	EN60598
<b>Electromagnetic Immunity</b>	EN61547, ENV5024 EN61000-4-2/3/4/6/8/11
<b>Harmonic Current Emissions</b>	EN61000-3-2 EN61000-3-3

### Power Factor Characteristic



### Efficiency vs Load

