

Add: No.12, Jinling Road, Zhongkai Hi-tech Development Zone,
 Huizhou City, Guangdong, China 516006
 Tel: 86-752-2771789 Fax: 86-752-2771684
 Email: marketing@hi-zealed.com
 Web: www.hzleddriver.com



HAD018CVN-T8

18W LED Tube Driver

Product Features

- Constant current output can load 20W Max.
- Class 2 LED power supply.
- Short circuit, over current and over voltage protection. Efficiency up to 91% .
- IP20 design
- 3 years quality warranty

Technical Specifications

Model No.	Output Power	Input Voltage Range	AC-Frequency	Standby Power	On Load Voltage	Output Current	Power Factor	Efficiency	Dimensions	Weight
HAD018 CVN-T8	18W	180-265V AC	50/60Hz	0.22A Max	72-90V	CC 210mA	0.96	92%	150*17*12 mm	30 g
					CV 5V	40mA				

Environmental Specifications

Operating Temperature	-30~45°C
Storage Temperature	-40~+70°C
Thermal Dissipation	Nature
Relative Humidity	5~40%
Isolation Voltage	---
Vibration	5-55Hz/2g, 30 Minutes
Life Time	25000Hours, at TC max

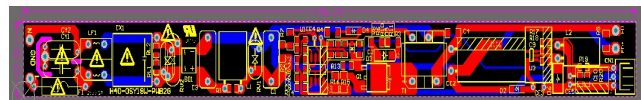
Conformity & Standards

EMI	EN55022 EN55015 Class B
Safety	-----
Electromagnetic Immunity	EN61547, ENV5024 EN61000-4-2/3/4/6/8/11
Harmonic Current Emissions	EN61000-3-2 EN61000-3-3

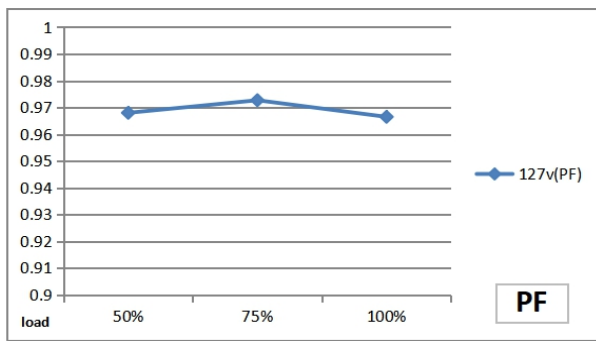
Installation Introduction



Dimensions Chart



Power Factor Characteristic



Efficiency vs Load

